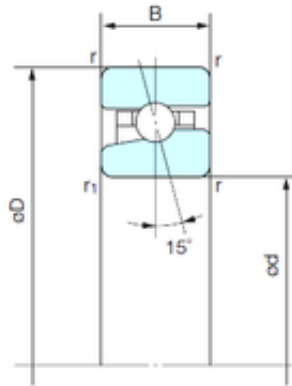




NTN Bearing Rolamentos do Brasil Ltda.

150 mm x 225 mm x 35 mm NACHI BNH 030 Angular Contact Ball Bearings



Bearing No. BNH 030

Size	150x225x35 mm
Bore Diameter	150 mm
Outer Diameter	225 mm
Width	35 mm
d	150 mm
D	225 mm
B	35 mm
C	35 mm
Angle (°)	15 °
r min.	2.1 mm
r1 min.	1 mm
Basic dynamic load rating (C)	102 kN
Basic static load rating (C0)	132 kN
(Grease) Lubrication Speed	6400 r/min

BNH 030 Bearing 2D drawings and 3D CAD models